



A helping hand for the physically challenged

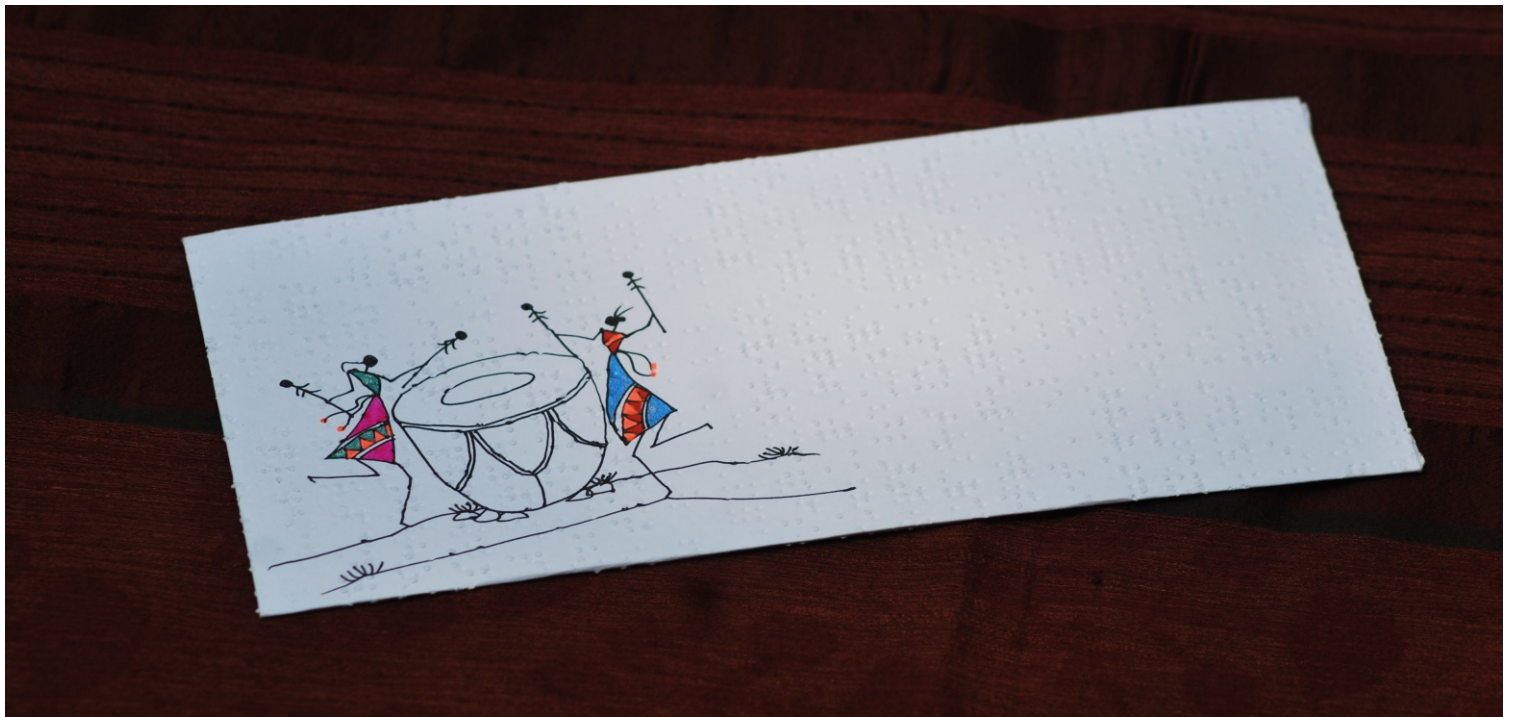
PRODUCTS

+91 9422509649

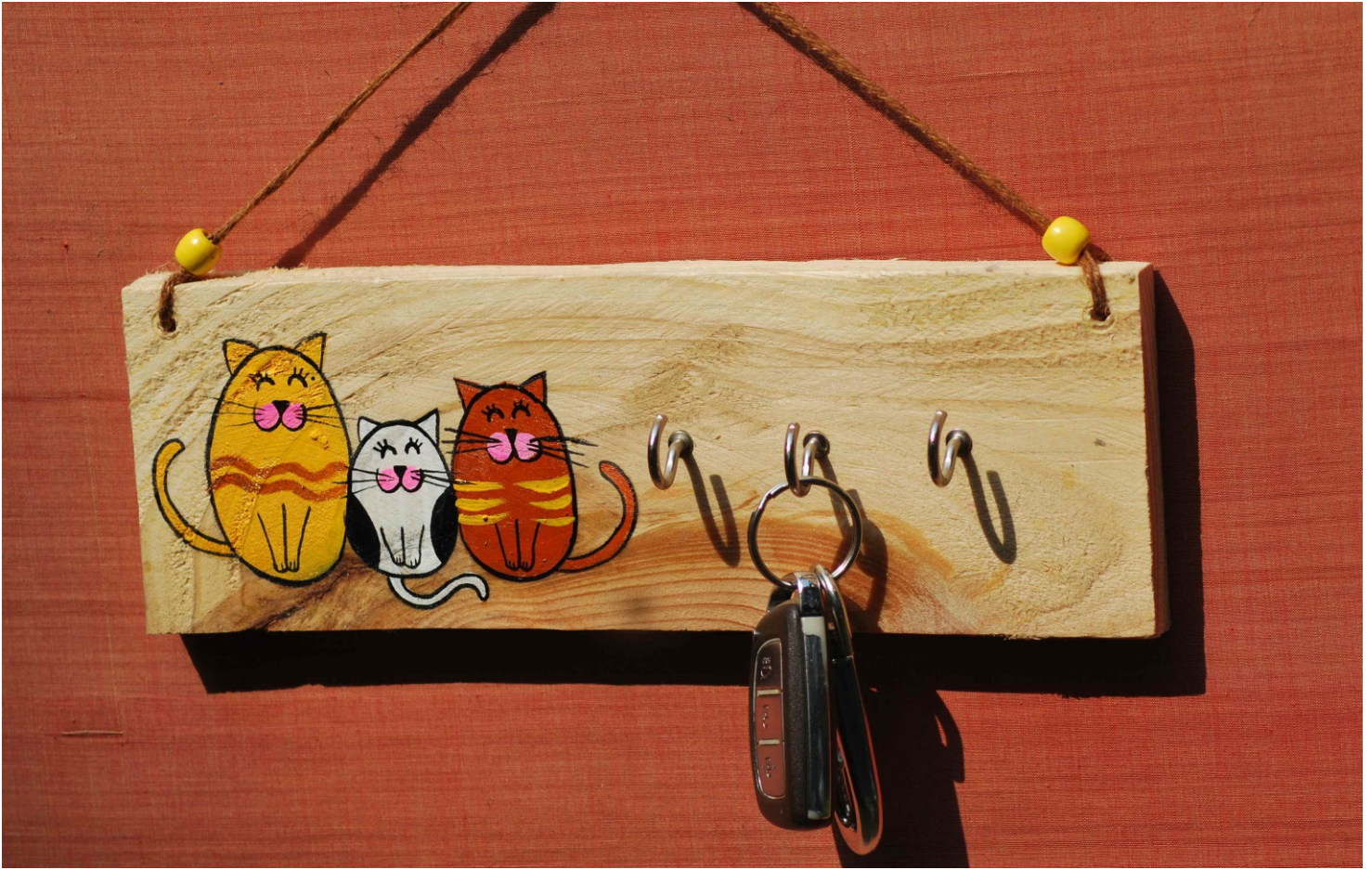
info@nirmalyatrust.org



Pen Stand
Rs. 150/- each



**Braille Envelope
Pkt. of 4 for Rs. 100 /-**



Keyholder
Rs. 500/- each



Round Magnet (wood)
Rs. 200/- each



**Cloth Coaster
Set of 6 for Rs. 300/-**



Floor-mat
Rs. 300/- each



Luggage Tag
Rs. 70/- each

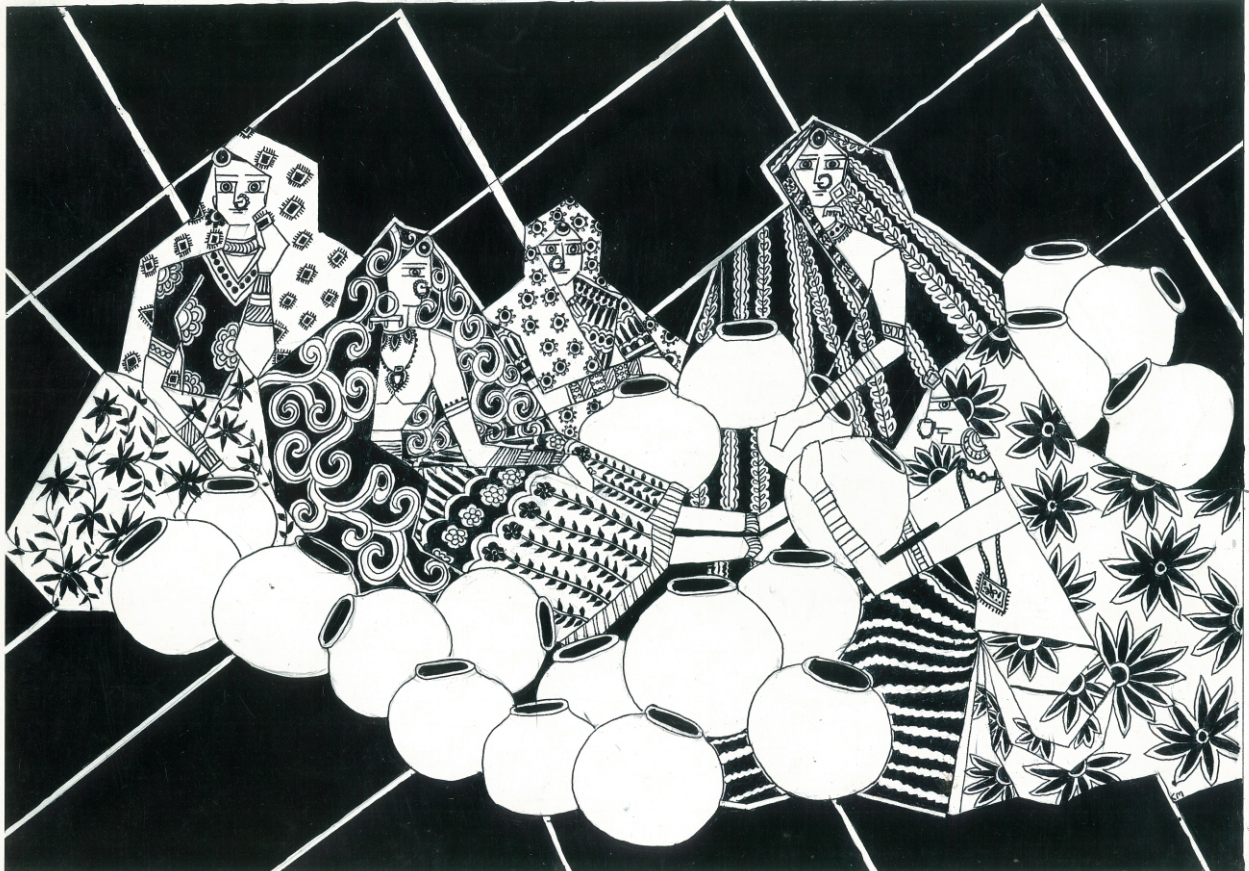


Table Mat
Rs. 150/- each

 **Nirmalya**
Trust
A helping hand for the physically challenged



Soaps with erasers
Rs. 150/- each



Leaf Mold / Compost
Rs. 50/- per 500 gm.



Diyas
Rs. 30/- each



Round Box
Rs. 200/- each



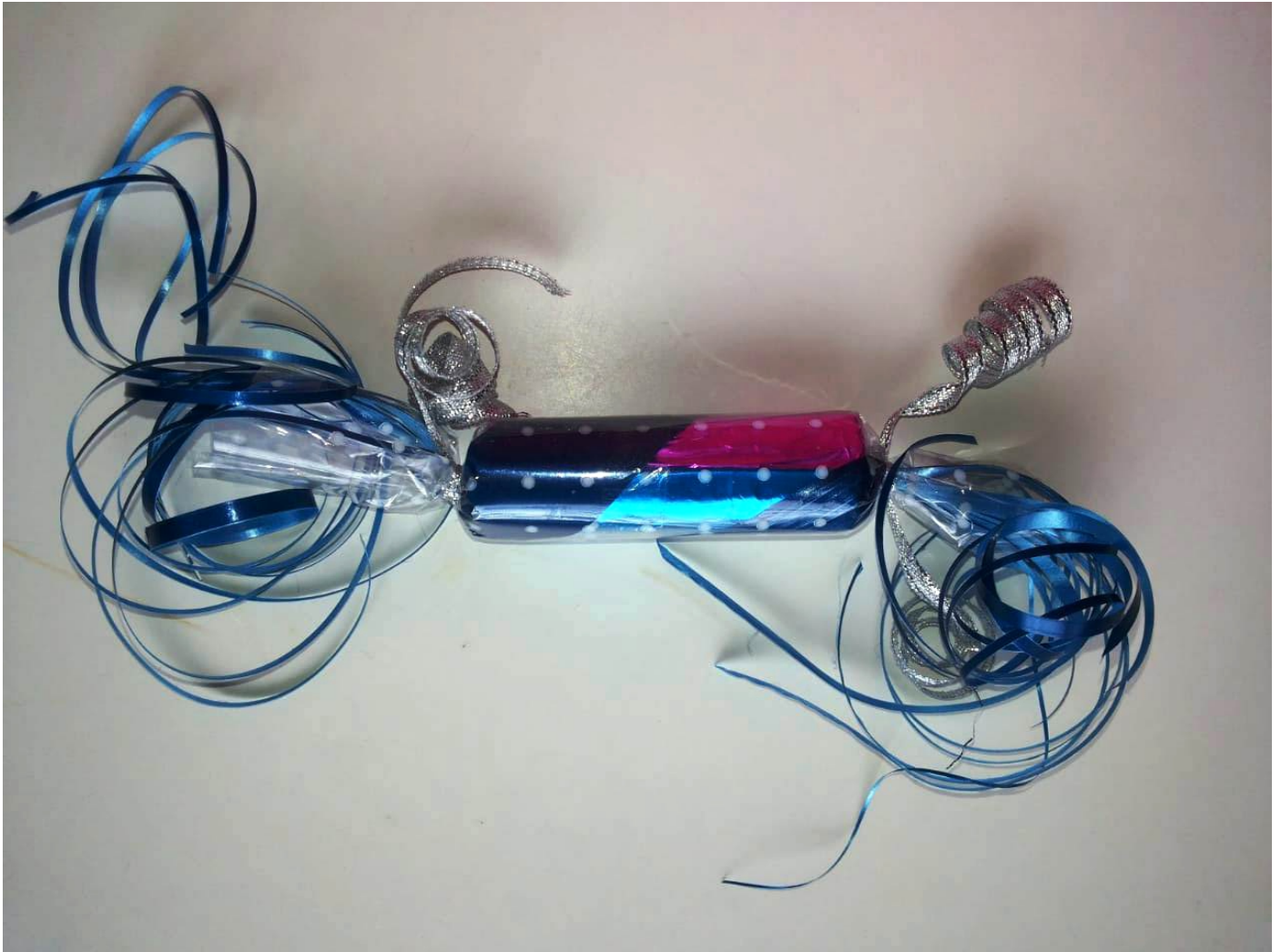
Diary
Rs. 150/- each



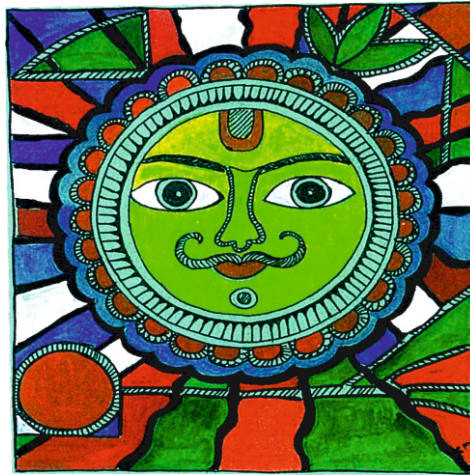
Square Magnet
Rs. 200/- each



**Gift Tag
Pkt. of 5 for Rs. 50/-**



Chocolate Log
Rs. 50/- each



**Paper Coaster
Set of 6 for Rs. 120/-**

Buy from:

Nirmalya Trust

Lane no. 7 Prabhat Road, Next to "Cassia" Apt.

+91 9422509649

info@nirmalyatrust.org

www.nirmalyatrust.org

Google Map Location:

<https://goo.gl/maps/jDF7AZDVdsEvMd3S8>

Time:

10 am to 5 pm

Monday to Saturday

Sundays closed

Payment:

Please use our bank details or our QR code

Account Name: Nirmalya Trust

Account No: 20062305886

IFSC Code: MAHB 0000 330

Bank of Maharashtra, Erandwane Branch

Pune 411004

paytm

Accepted Here



Use Paytm for UPI